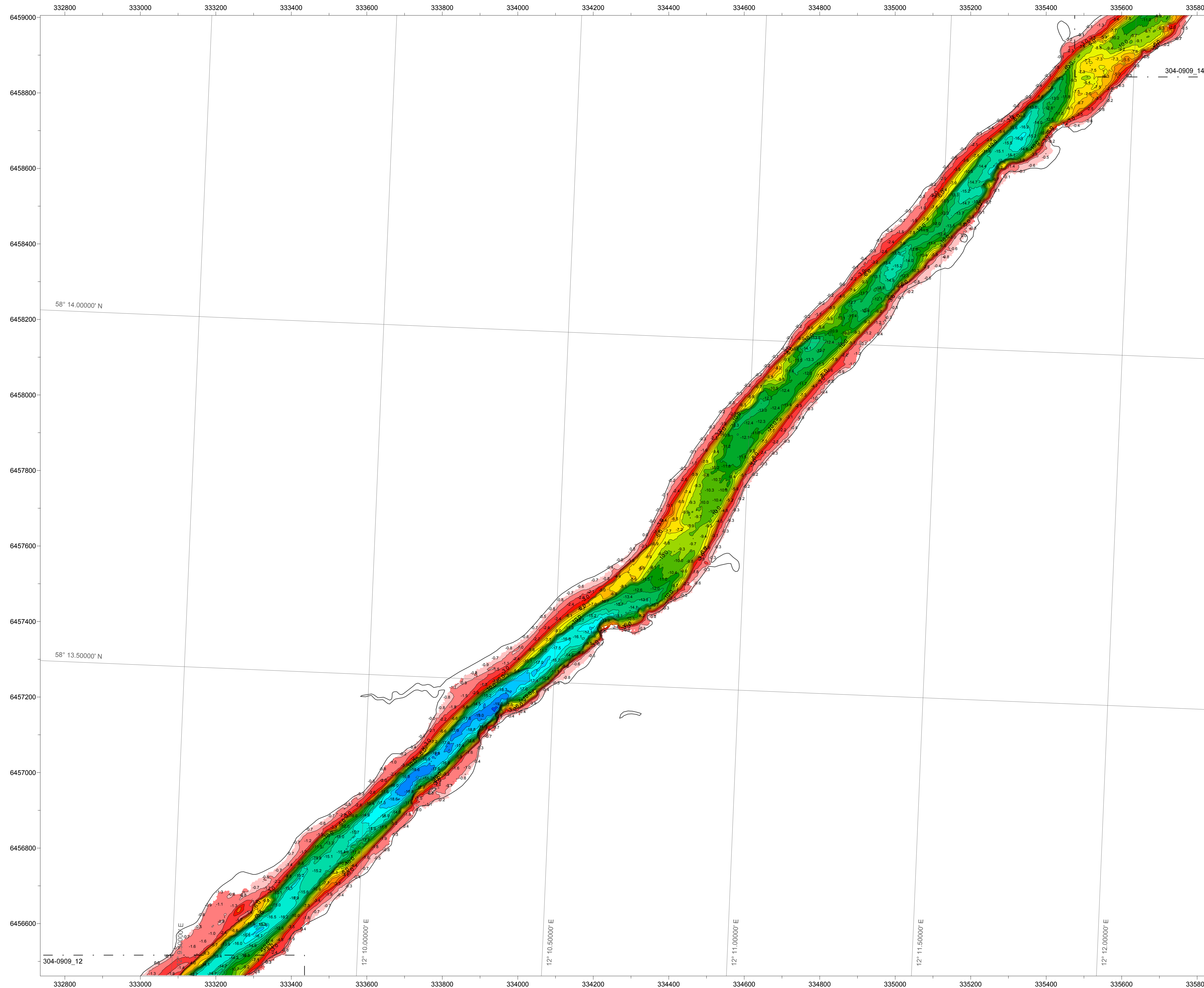


MULTIBEAMEKOLODNING GÖTA ÄLV

13

U304-0909

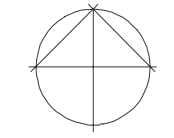


LEGEND

Symbols and seabed features:

Depth contour line	—	0
Equidistance = 1m	—	-1
Lat/Long WGS84	—	-2
Waterline	—	-3
Connection line	—	-4
		-5
		-6
		-7
		-8
		-9
		-10
		-11
		-12
		-13
		-14
		-15
		-16
		-17
		-18
		-19
		-20
		-21
		-22
		-23
		-24

North arrow



Depth Color Scale

NOTES

Positioning system : Novatel Propak V3
 Multibeam sensor : Kongsberg EM3002D
 Motion sensor : Octans 100
 SVP sensor : Reson SVP15
 SVP online sensor : Valeport Mini SVS

Grid size : 2x2 m
 Grid type : Shoal
 Depth Reference : RH 2000 +7.0 m

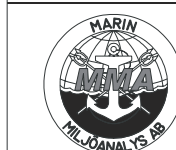
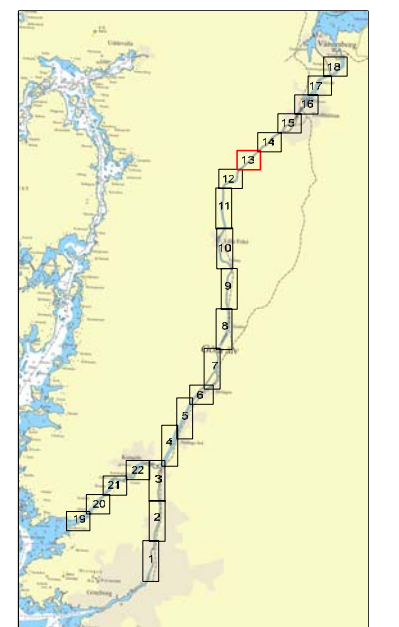
SCALE 1:5000



COORDINATE SYSTEM

System : SWEREF 99 TM
 Projection zone/grid : Gauss-Kruger
 UTM zone number : -
 Central meridian : 15 degrees
 False easting metres : 500 000
 False northing metres : N/A
 Scale factor at C.M. : 0,9996

KEY MAP



MARIN MILJÖANALYS AB
 Varbergsgatan 12 B, S-412 65 Göteborg, SWEDEN
 Telephone +46 (0)31 7046525
 Fax +46 (0)31 7237399

MULTIBEAMEKOLODNING

SGI
 GÖTA ÄLV - DELSTRÄCKA 2



C				
B				
A				
Rev	By	Revision		
CLIENT APPROVAL				
Status	Stage	Name/Indicator	Signature	Date
Preliminary				
Final				
Survey date	2009-10	Survey Vessel	R/V RANJA	
Client Ref No.		Ref No.	U304-0909	
Interp.	P.L.	Drawn	N.L.	
Checked	M.H.	Drawing date	2009-10-15	
Client	SGI	Drawing No.	304-0909_13	