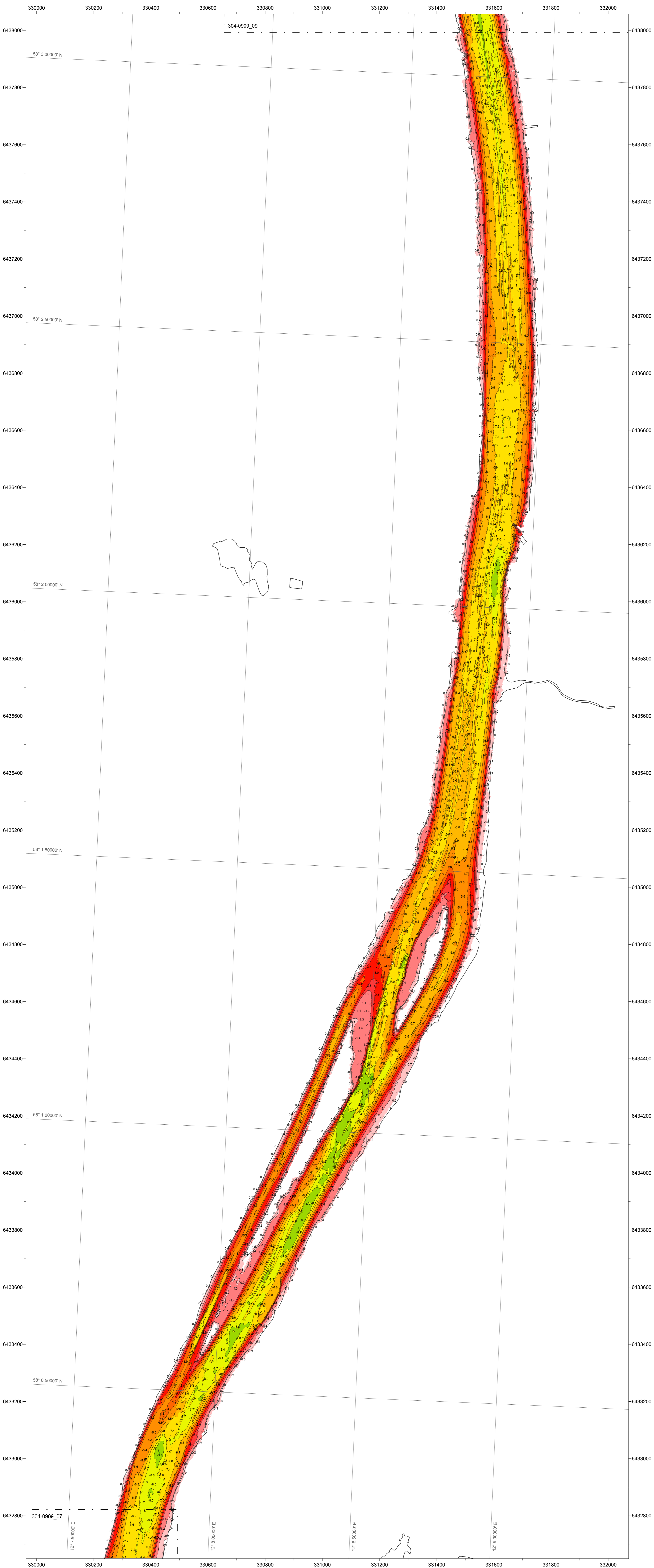


# MULTIBEAMEKOLODNING GÖTA ÄLV

08

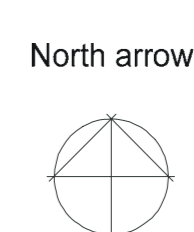


## U304-0909

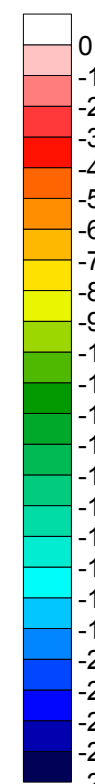
### LEGEND

Symbols and seabed features:

- Depth contour line
- Equidistance = 1 m
- Lat/Long WGS84
- Waterline
- Connection line



Depth Color Scale

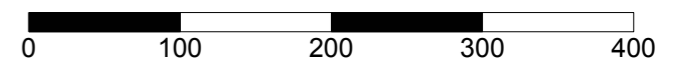


### NOTES

Positioning system : Novatel Propak V3  
 Multibeam sensor : Kongsberg EM3002D  
 Motion sensor : Octans 100  
 SVP sensor : Reson SVP15  
 SVP online sensor : Valeport Mini SVS

Grid size : 2x2 m  
 Grid type : Shoal  
 Depth Reference : RH 2000 +0.0 m

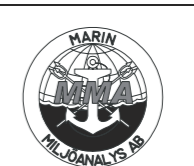
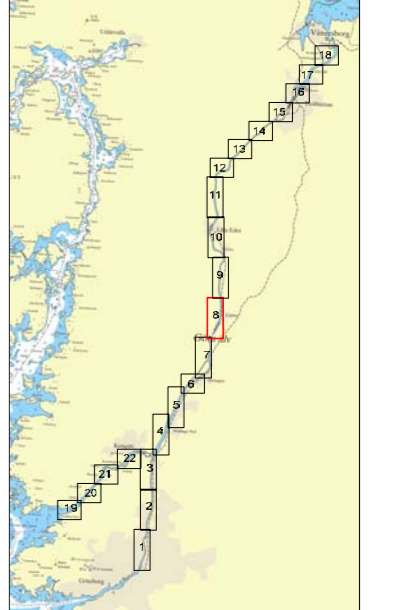
### SCALE 1:5000



### COORDINATE SYSTEM

System : SWEREF 99 TM  
 Projection zone/grid : Gauss-Kruger  
 UTM zone number :  
 Central meridian : 15 degrees  
 False easting metres : 500 000  
 False northing metres : N/A  
 Scale factor at C.M. : 0,9996

### KEY MAP



**MARIN MILJÖANALYS AB**  
 Varbergsgatan 12 B, S-412 85 Göteborg, SWEDEN  
 Telephone +46 (0)31 7046525  
 Fax +46 (0)31 7237399

MULTIBEAMEKOLODNING  
 SGI   
 GÖTA ÄLV - DELSTRÄCKA 1

C				
B				
A				
Rev	By	Revision		
CLIENT APPROVAL				
Status	Stage	Name/indicator	Signature	Date
Preliminary				
Final				
Survey date	2009-10	Survey Vessel	R/V RANJA	
Client Ref No.	U304-0909	Ref No.	N.L.	
Interp.	P.L.	Drawn	N.L.	
Checked	M.H.	Drawing date	2009-10-15	
Client	SGI	Drawing No.	304-0909_08	